

AGENDA SUPPLEMENT (1)

Meeting: Southern Area Planning Committee

Place: The Pump Room - The Old Fire Station Enterprise Centre, 2 Salt Lane,
Salisbury, SP1 1DU

Date: Thursday 1 June 2023

Time: 3.00 pm

The Agenda for the above meeting was published on 22 May 2023. Additional documents are now available and are attached to this Agenda Supplement.

Please direct any enquiries on this Agenda to Lisa Alexander of Democratic Services, County Hall, Bythesea Road, Trowbridge, direct line 01722 434560 or email lisa.alexander@wiltshire.gov.uk

Press enquiries to Communications on direct lines (01225)713114/713115.

This Agenda and all the documents referred to within it are available on the Council's website at www.wiltshire.gov.uk

Part I
Committee Presentation Slides *(Pages 3 - 18)*

DATE OF PUBLICATION: 31 May 2023

This page is intentionally left blank

Southern Area Planning Committee

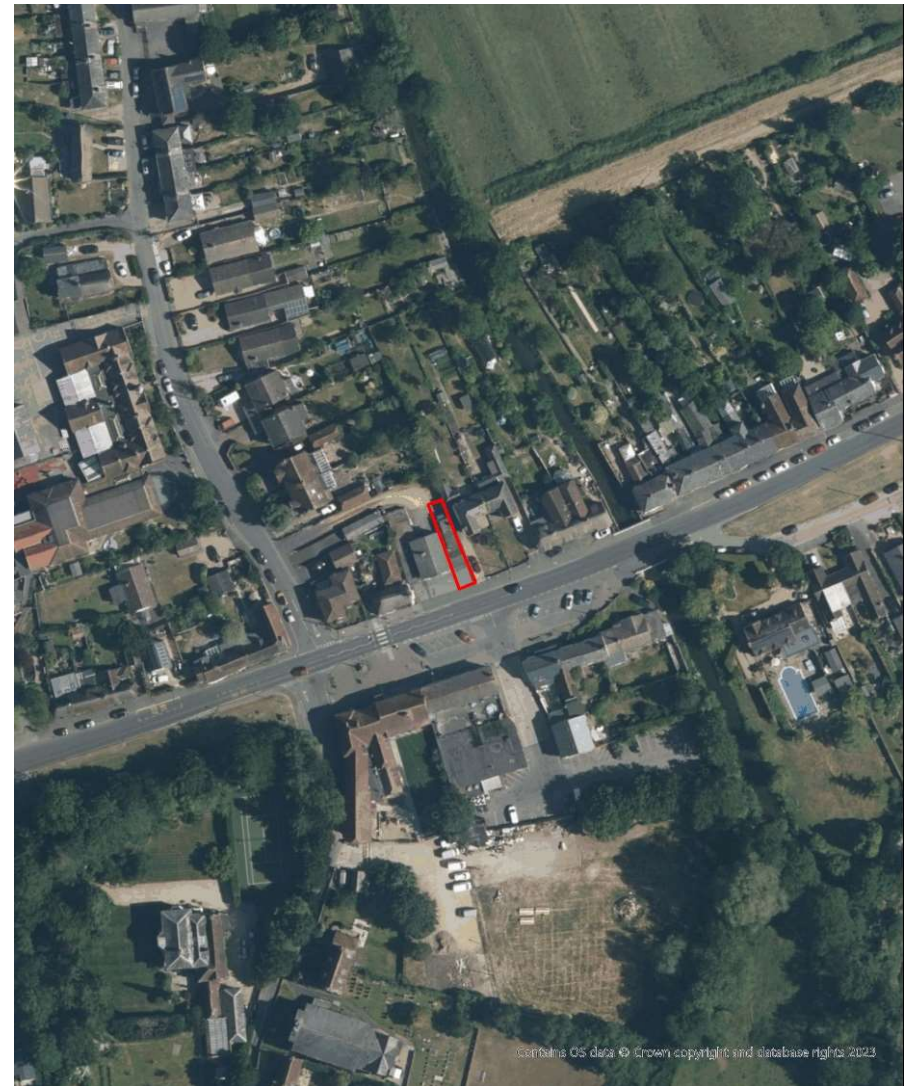
1st June 2023

7a) PL/2023/00563 - Unit 4, 53 The Borough, Downton, SP5 3LX

Change of use of Unit 4. 53, The Borough from The Foot Unit D1 to a Takeaway food establishment.

Recommendation: Approve with conditions

Page 4



Site Location Plan

Aerial Photography

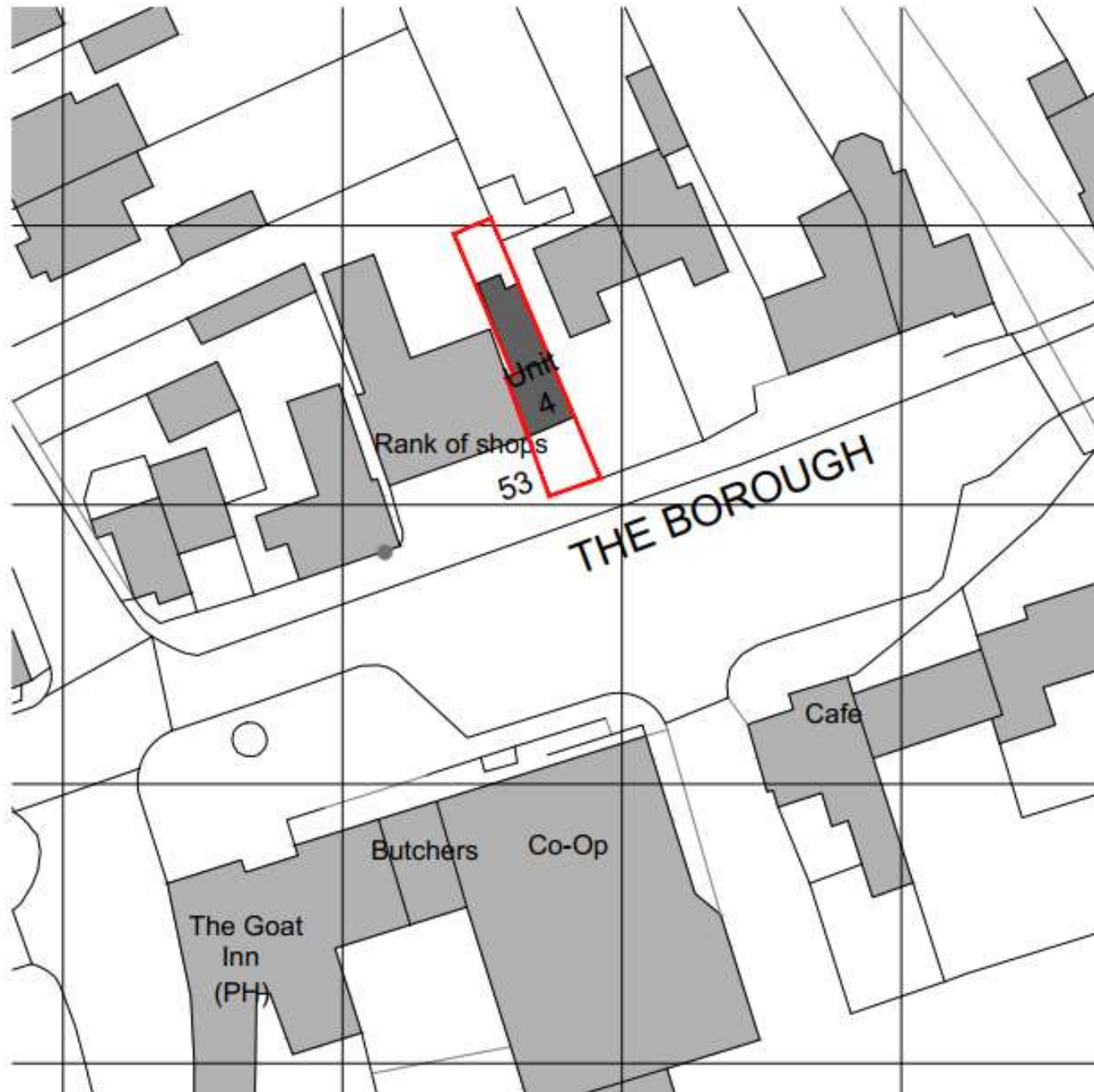




Photo of site and context/parking areas

Page 6





Front and eastern view of building



Rear of building and parking areas/side of No. 55 and rear windows of no. 53A

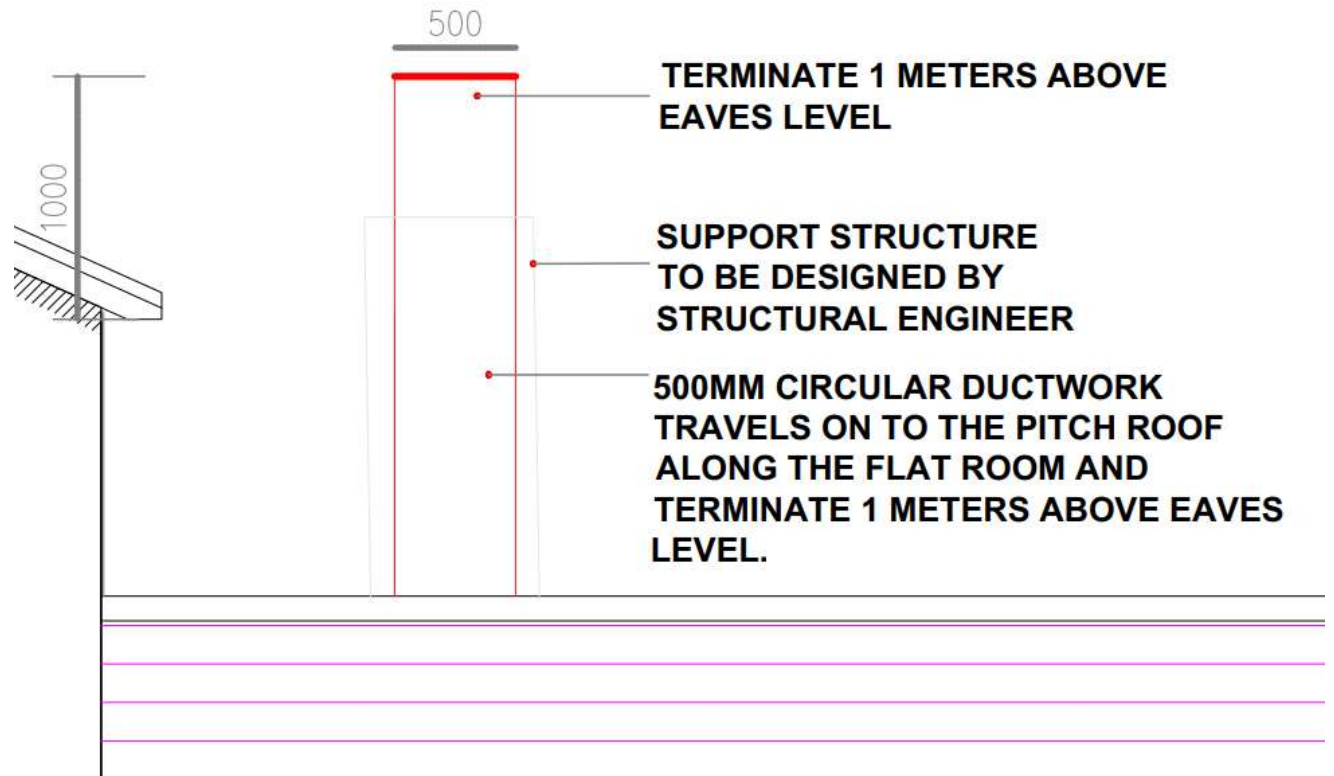


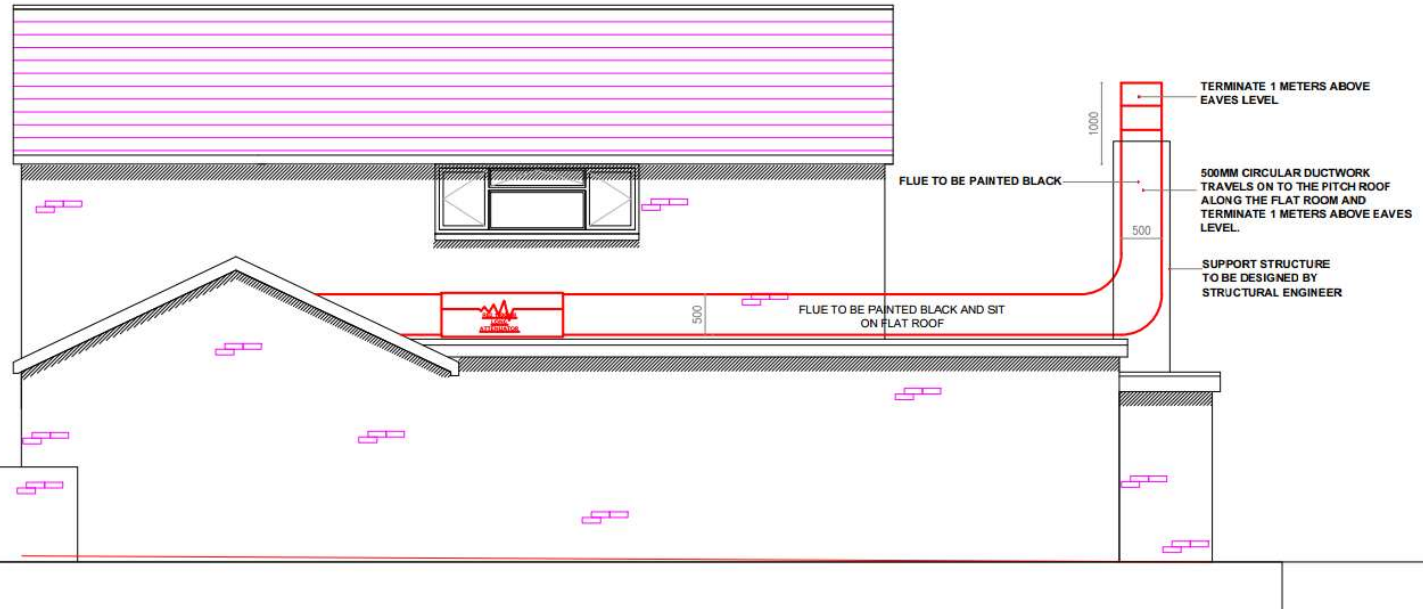


Rear of building, rear of No.53A, and parking area.

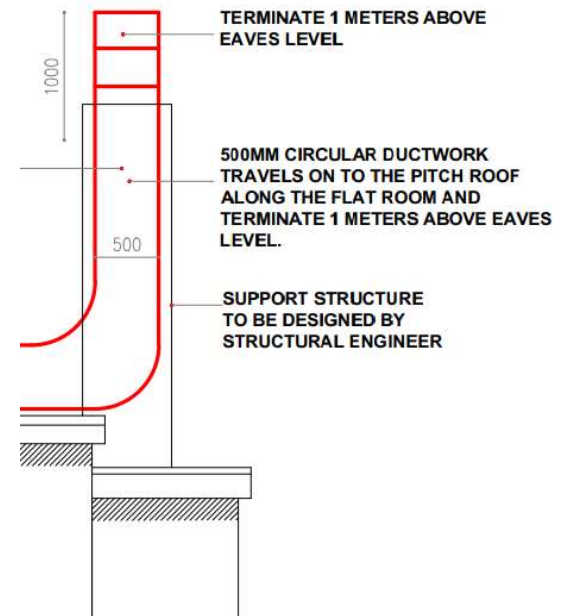


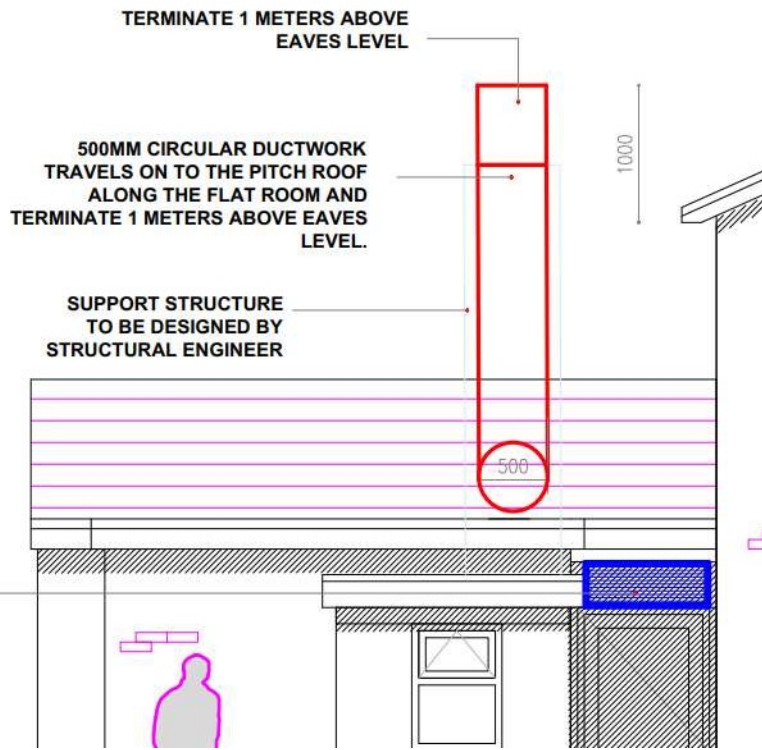
Front elevation of unit from The Borough



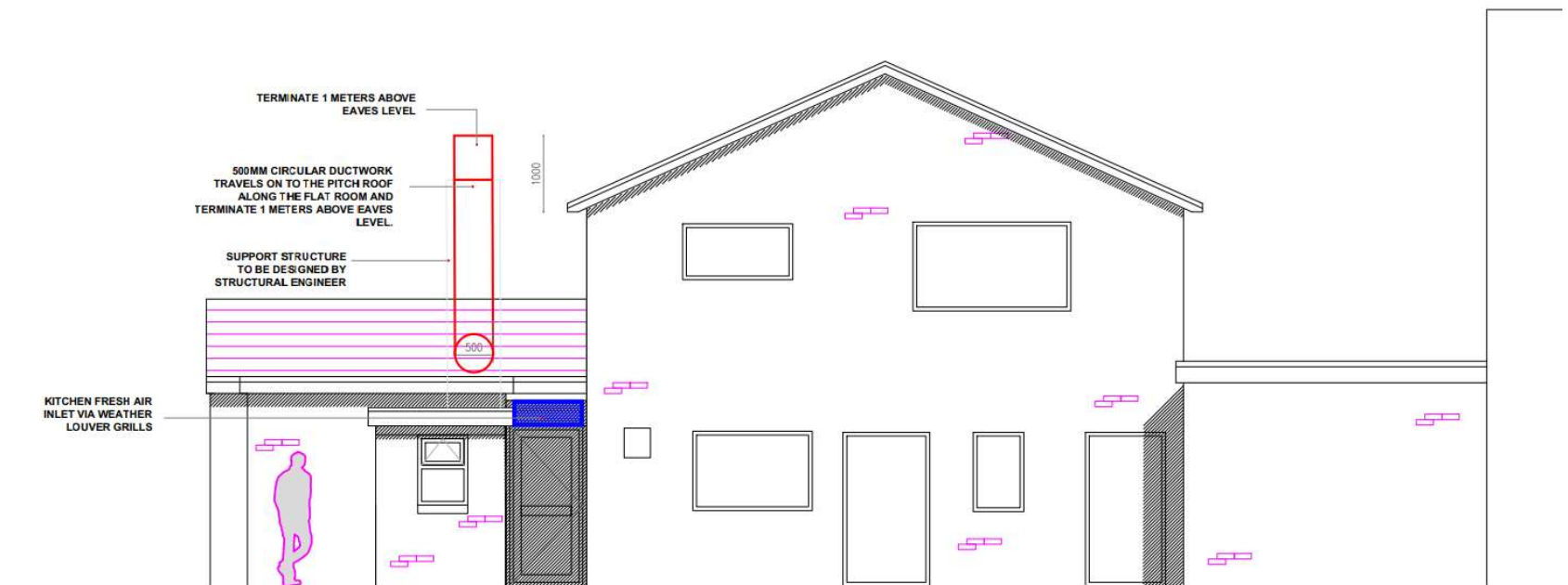


East side elevation of unit from No. 55, and showing side window/elevation of No 53 A

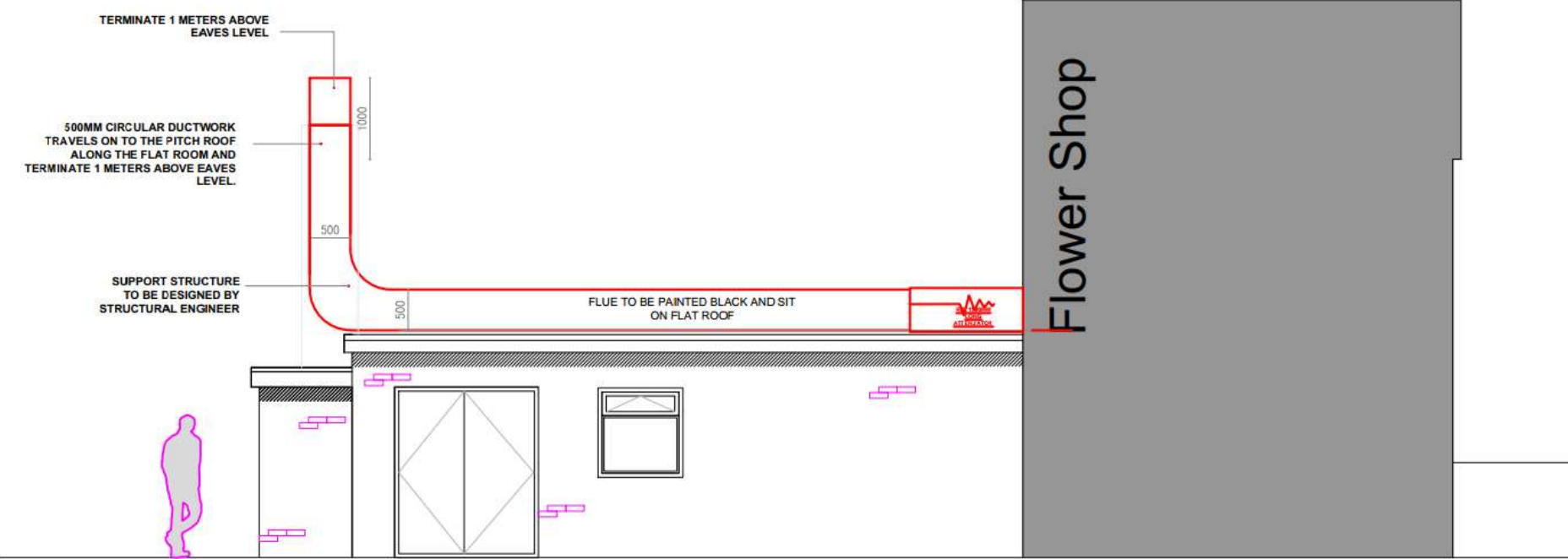
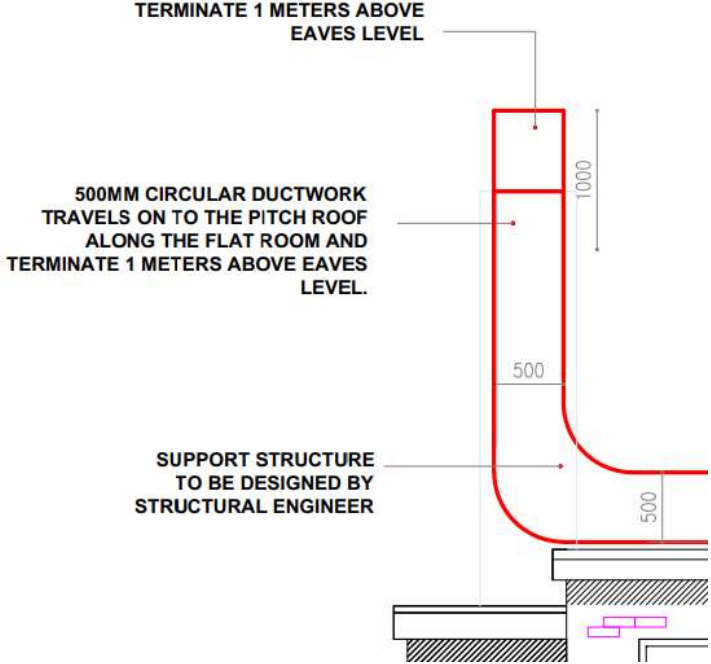




Rear north elevation of unit



Western elevation



Internal layout of unit plus equipment

500MM CIRCULAR DUCTWORK TRAVELS ON TO THE PITCH ROOF ALONG THE FLAT ROOM AND TERMINATE 1 METERS ABOVE EAVES LEVEL.

FILTERED FRESH AIR SUPPLY FAN UNIT , 102H2WL/4 AIR FLOW , INSTALLED USING FLEXIBLE DUCTWORK CONNECTIONS AND ANTI VIBRATION RUBBER MOUNTS AND ISOLATORS TO ELIMINATE VIBRATION LEVELS AND WITH ACOUSTICA R02-600MM ATTENUATOR INSTALLED BEFORE AND R02-1500MM AFTER THE FAN UNIT TO ACHIEVE THE INSERTION LOSS -10DBA

KITCHEN FRESH AIR INLET VIA WEATHER LOUVER GRILLS

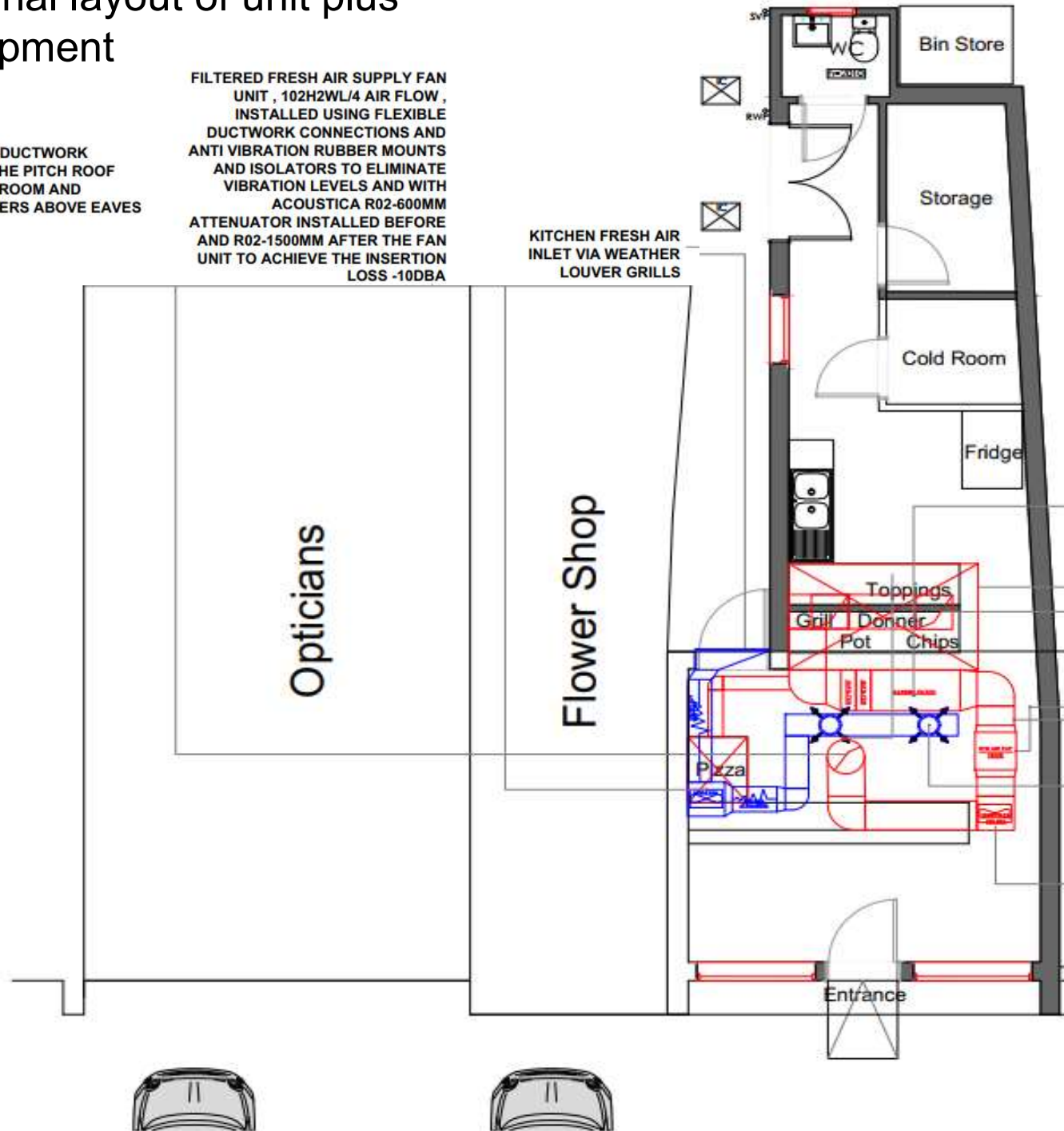
HIGH LEVEL ODOUR FILTRATION UNIT, THE FILTRATION SYSTEM CONSIST OF , 2 NO DISPOSABLE PRE FILTER G4 ,HIGHLY EFFICIENTLY IN REMOVING FILTERING OIL AND GREASE PARTICLES , FOLLOWED BY AIR CLEAN EXTRA DUTY CARBON FILTER UNIT & CASING, CARBON FILTERS USE PANELS OF ACTIVATED CARBON TO REMOVE THE MALODOUROUS GASES WITHIN THE COMMERCIAL KITCHEN EXTRACT DUCT THROUGH THE PROCESS OF CHEMICAL ADSORPTION, TO GIVE DWELL TIME OF 0.4SEC , RECOMMENDED TO BE REPLACED VERY 6-12 MONTHS DEPENDING ON THE USAGE

KITCHEN CANOPY
KITCHEN EXTRACT

RYD AIR ESP 5000B WITH UV UNIT TO ELIMINATE COOKING GREASE , SMOKE AND ODOURS

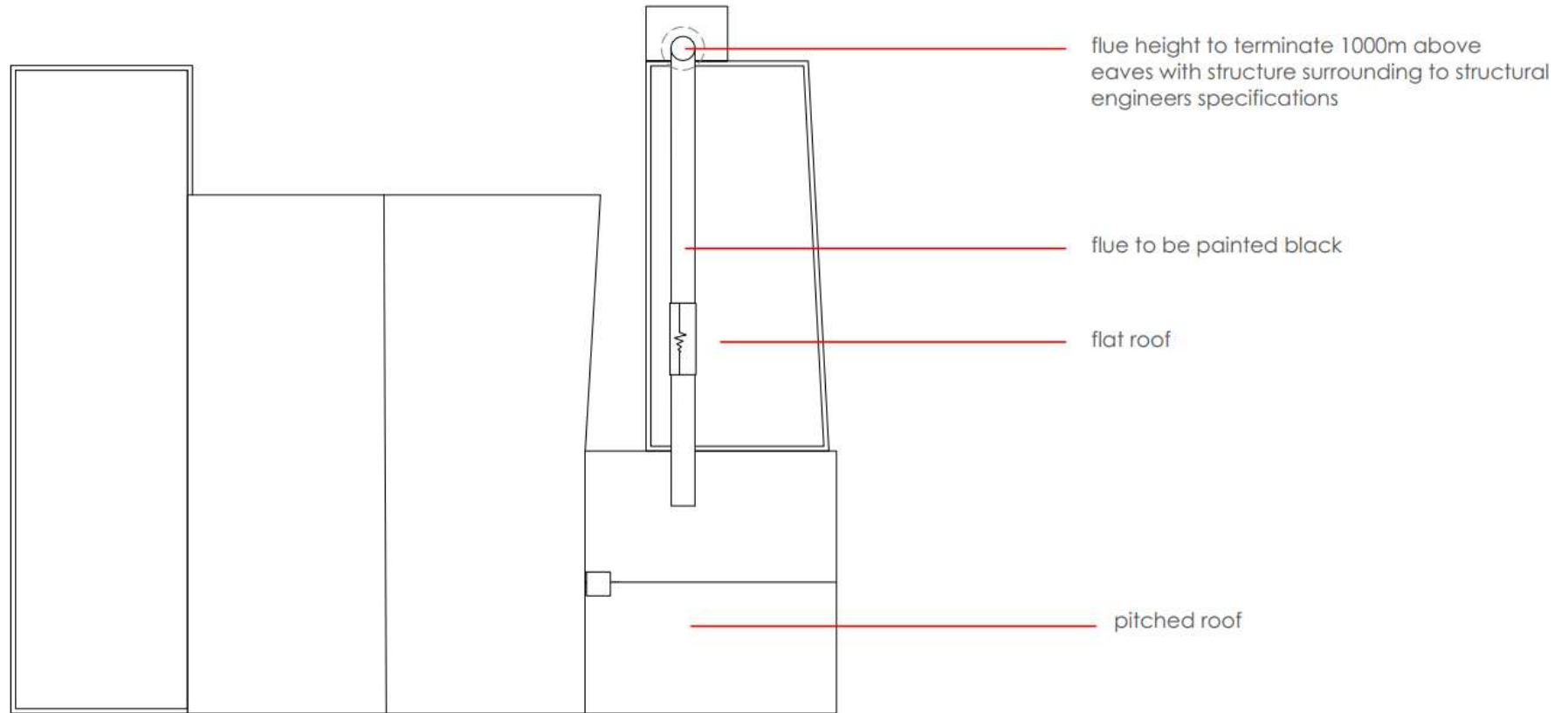
500MM DIAMETER KITCHEN EXTRACT DUCTWORK WITH CLEANING ACCESS HATCHES EVERY 2 METERS

FRESH AIR



Roof plan showing location of flue on flat roof

Page 15

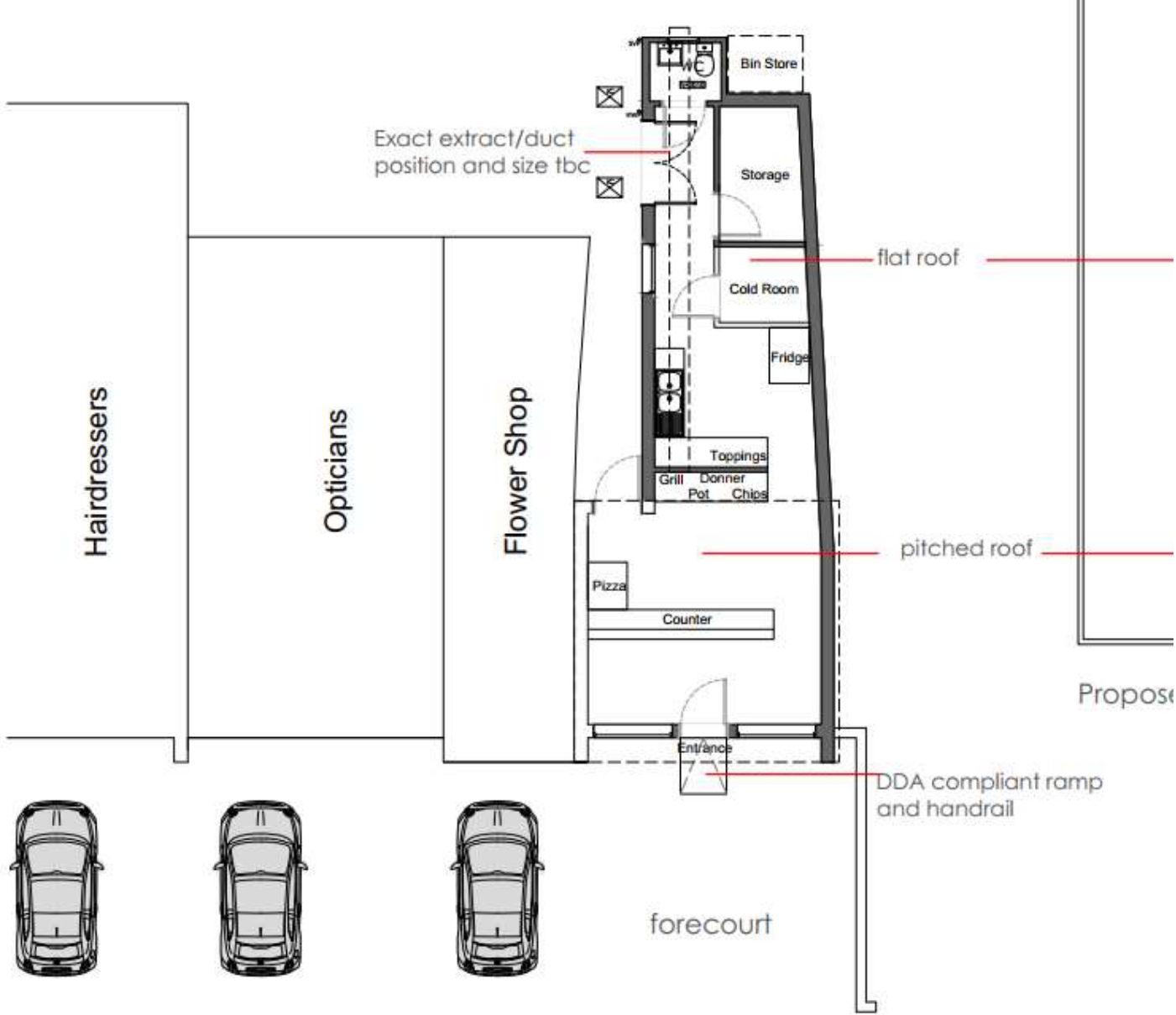


Proposed Roof plan 1:100



Parking area

Page 16



Pavement

Southern Area Planning Committee

1st June 2023

This page is intentionally left blank